

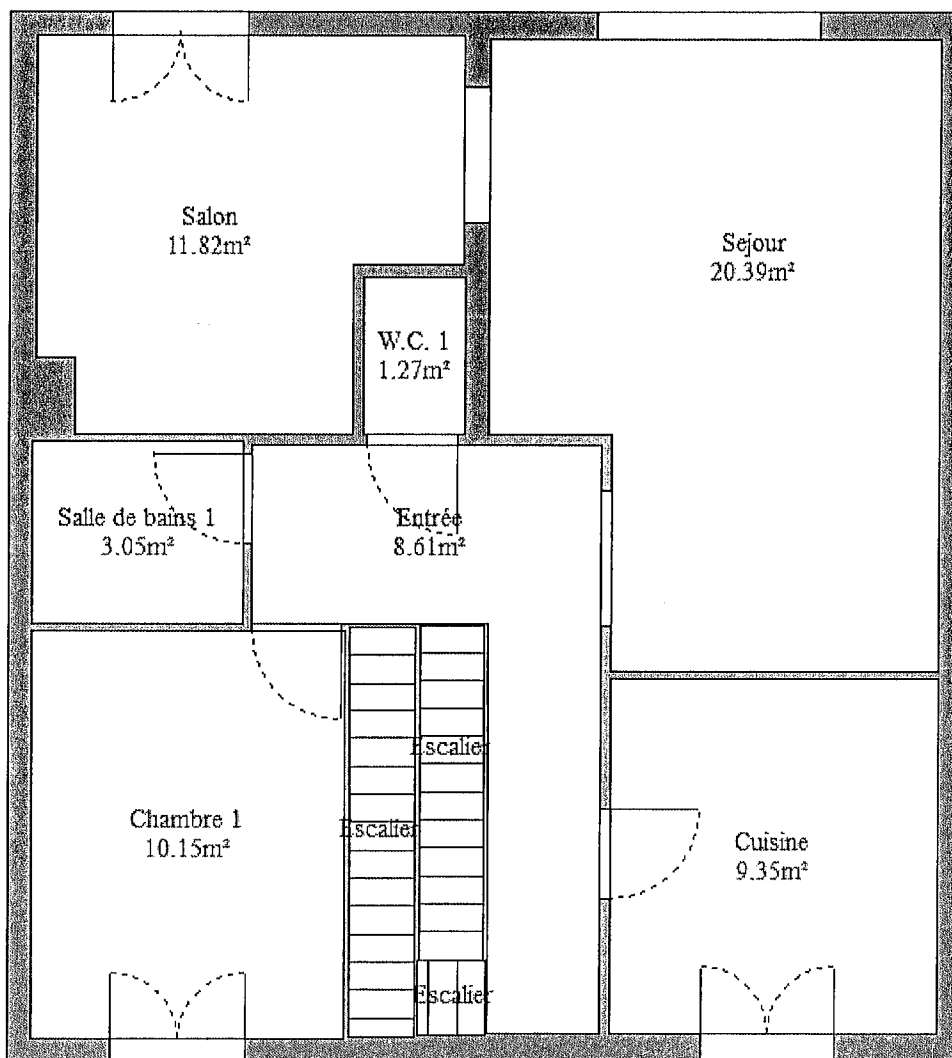


3 A Rue Gambetta 94190 VILLENEUVE SAINT GEORGES

Superficie : 106.68 m<sup>2</sup>  
Non cotés et non contractuel

Rez de chaussée

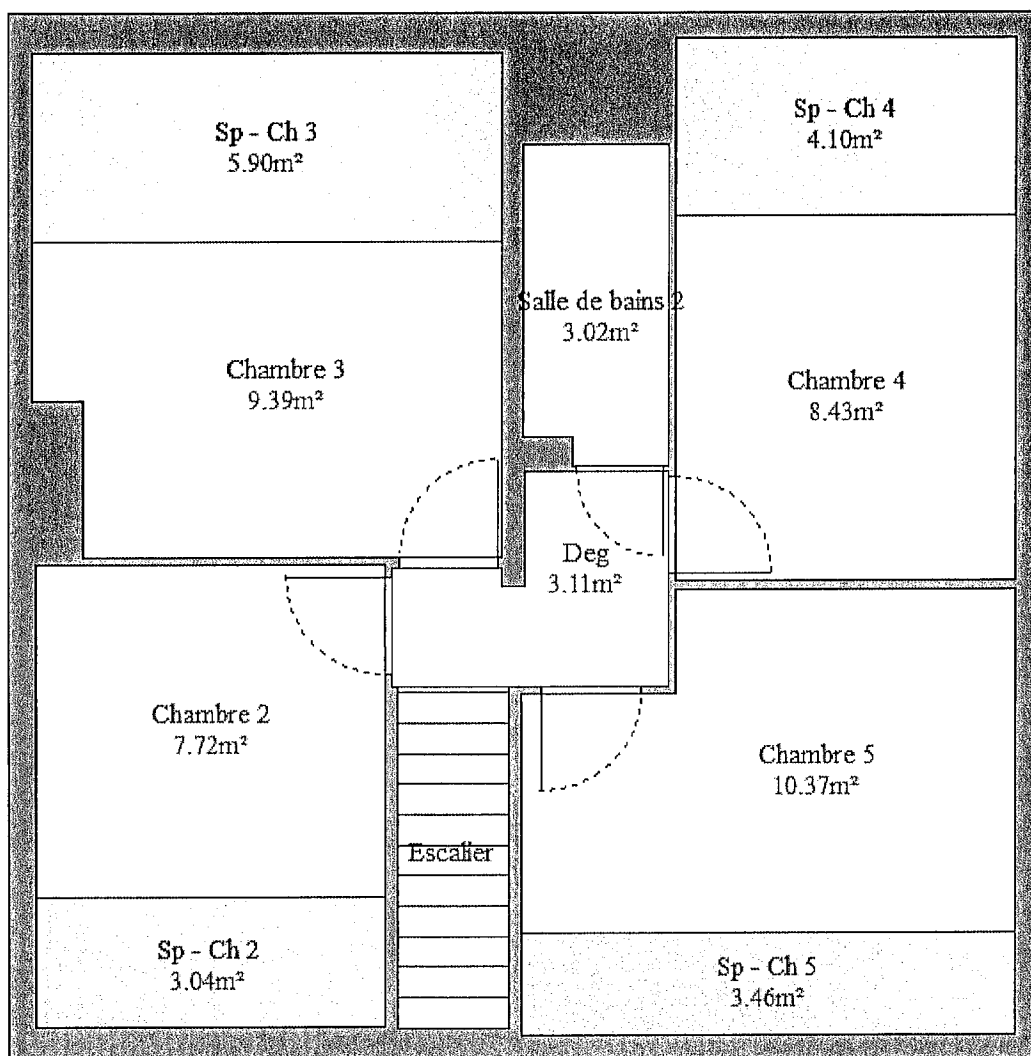
1/3



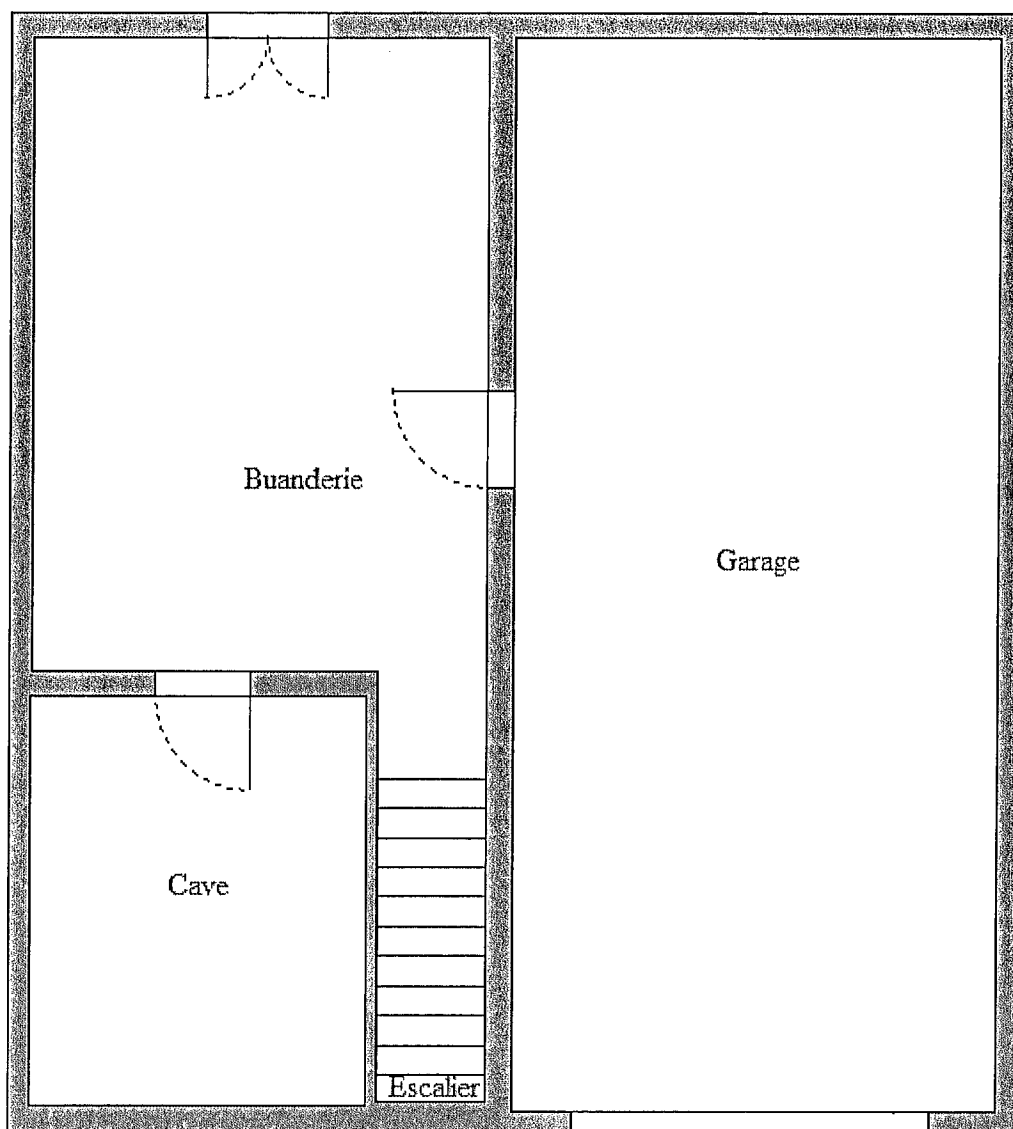


1er Etage

2/3



Sous-sol



SARL CPEE - 11, avenue Jean Jaurès • 93220 GAGNY

SARL au capital de 8 000 € - RCS Bobigny - SIRET 452 900 202 00014 - Code APE 7120B

Assurance RCP : GENERALI Contrat N° 90AL298079